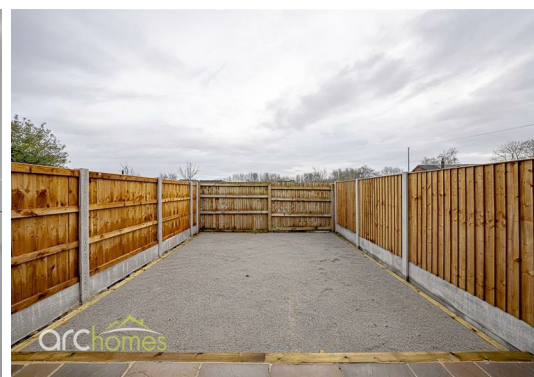






16 Poplar Close, M29 8QP £1,100 Per month

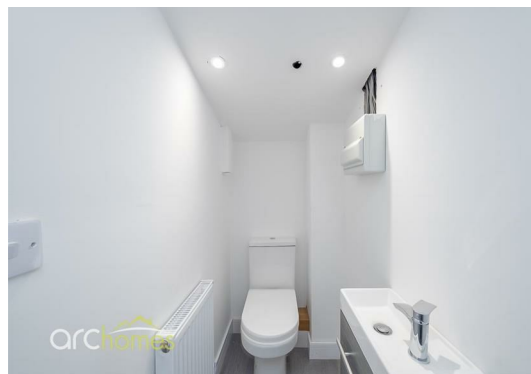
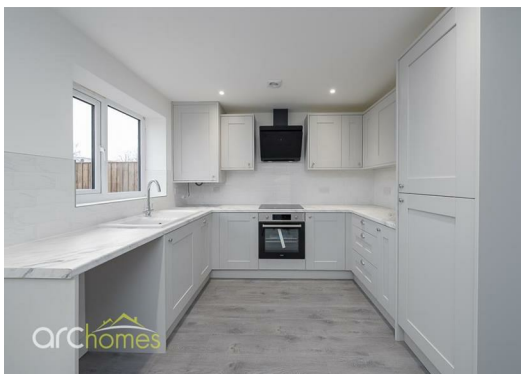
****ONE REMAINING**** Arc Homes are delighted to present TO LET these beautifully finished, BRAND NEW three-bedroom homes in Tyldesley. There are currently four properties available, offering a choice of mid-terrace and end-terrace layouts. Upon entering, you are welcomed into a bright entrance hall leading through to a spacious main living area and downstairs W/C. The ground floor is completed by a stylish, brand new modern kitchen fitted with integrated appliances, including a fridge freezer and oven. To the first floor, the property offers three well-proportioned bedrooms and a contemporary three-piece family bathroom suite. Externally, the homes benefit from a low-maintenance rear yard and a paved front area with an allocated parking space. Early viewing is highly recommended to avoid disappointment. Rent: £1,100.00 pcm Deposit: £1,269.00. Restrictions: Bond Scheme not accepted.

For the information for our clients, our client money protection is Propertymark and our redress scheme is via The Property Ombudsman. For more information, please see our website www.archhomes.net.



Energy Efficiency Rating		
	Current	Potential
Very energy efficient - lower running costs		
(92 plus) A		
(81-91) B		
(69-80) C		
(55-68) D		
(39-54) E		
(21-38) F		
(1-20) G		
Not energy efficient - higher running costs		
England & Wales EU Directive 2002/91/EC 		

Environmental Impact (CO ₂) Rating		
	Current	Potential
Very environmentally friendly - lower CO ₂ emissions		
(92 plus) A		
(81-91) B		
(69-80) C		
(55-68) D		
(39-54) E		
(21-38) F		
(1-20) G		
Not environmentally friendly - higher CO ₂ emissions		
England & Wales EU Directive 2002/91/EC 		



30 Bolton Old Road, Atherton, M46 9DL

T. 01942 363599
 info@arc-homes.net

